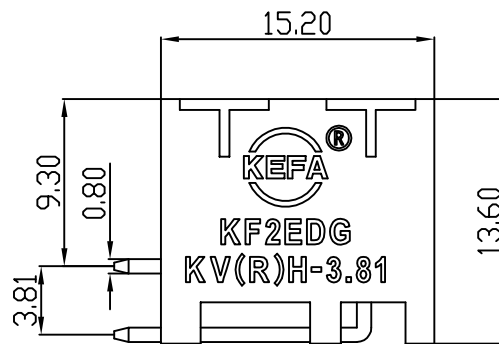
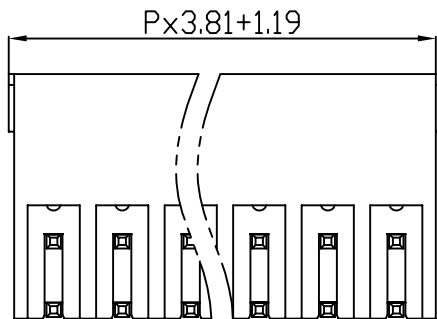
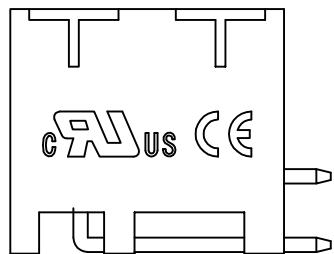
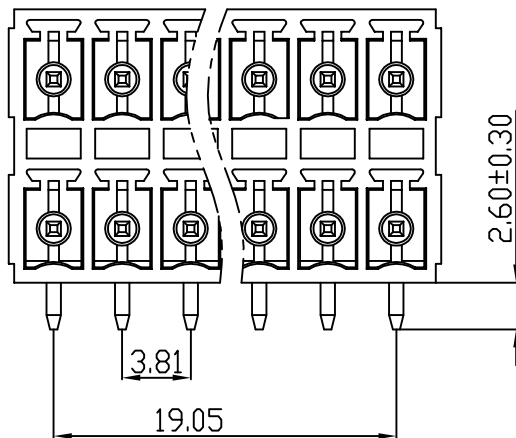
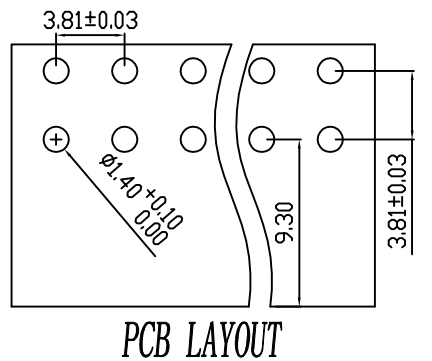


linear dimension(Tolerances Standard GB/T 14486-2008)



variable range	to 6	over 6 to 10	over 10 to 30	over 30 to 60	over 60 to 100	over 100 to 160	over 160 to	to 10	over 10 to 100	over 100 to
tolerance	±0.20	±0.30	±0.50	±0.70	±1.00	±1.30	±1.60	0.10	0.30	0.60



REVISION RECORD

REV.	DESCRIPTION	ECN No.	APPROVED	DATE

UL/CUL 技术参数 UL/CUL Technical Data							
等级	Use Group	B	C	D			
额定电压	Rated Voltage [V]	300	-	300			
额定电流	Rated Current [A]	8	-	10			
接线范围	Wire Range						
单/多芯线	Solid/Stranded [AWG]	-					
耐电压	Withstanding Voltage	1600V/1Min					
IEC 技术参数 IEC Technical Data							
过电压类别	Overvoltage Category	III	III	II			
污染等级	Contamination Class	-	2	2			
额定电压	Rated Voltage [V]	-	250	320			
额定电流	Rated Current [A]	-	7	7			
额定冲击电压	Impulse withstand voltage ^a [KV]	-	4.0	2.5			
导线截面积	Conductor cross section						
硬质/柔性导线	Solid/flexible [mm ²]	-					
材料 Material							
绝缘材料	Insulation Material	PA66					
阻燃等级	Imflammability	UL94V-0					
导体材料	Contactive Material	铜合金 Copper alloy					
导体表面镀层	Contactive Coating	镀锡 Tin Plated					
一般参数 Other Data							
间距	Pitch [mm]	3.81					
极数	Poles [P]	2x(2-24)					
剥线长度	Stripping Length [mm]	-					
螺丝	Screw/扭矩 Torque(Max) [N.m]	-					
工作温度	Operating temperatur [°C]	-40~105					
引针尺寸	Pin Dimensions [mm]	2.6					
PCB板孔径	PCB Hole Diameter [mm]	1.4					

DES.	DATE	单位 / UNITS	mm	尺寸 / SIZE	A4	比例 / SCALE	1:1	第三视角 / THIRD ANGLE PROJECTION	版本 / REV	A
CHK.	DATE			慈溪市科发电子有限公司 CIXI KEFA ELECTRONIC CO., LTD		名称 / TITLE		KF2EDGKRH-3.81		
APP.	DATE									