

07/08



袋王系列

高级袋用
单张式方底纸袋制袋机

耐久性!! EXCELLENT DURABILITY!!

采用世界一流厂家或中外合资厂家生产的电机装置及高精度,高材料的机械部件,确保了机械的耐久性。
This machine constructed with quality parts for excellent durability, and accuracy assurance.

高经济性!! HIGHLY ECONOMICAL!!

操作简单,减少了操作员工,电量及副资材(如粘合剂等)消费量低。
Easy operation and work with few operators, using less electrical power consumption and sub material (such as Adhesives).

高生产率!! HIGH PRODUCTIVITY!!

大、小批量生产均可适应,缩短了换型(尺寸更换)时间,生产效率大为提高,高度安全在提高生产效率同时,重视了安全性,多处采取安全护罩及保险开关,防止事故发生。
Suitable for big and small batch production and reduced adjustment time and improved production efficiency. Safety has been ensured.
While improving the production efficiency, it pays more attention to safety, adopts safety covers and emergency switches to avoid accident.

高度安全!! HIGH SECURITY!!

在提高生产效率同时,提高了安全性。
While improving the production efficiency, safety has been improved as well.

SPECIFICATIONS // 主要规格和参数

	KING-220	KING-350	KING-450	KING-500
袋宽 / BAG WIDTH (mm)	100-220	150-350	220-450	280-500
底宽 / BOTTOM WIDTH (mm)	50-100	70-160	70-170	80-230
纸筒长度 / TUBE LENGTH (mm)	210-410	280-640	300-620	400-800
纸宽 / SHEET WIDTH (mm)	325-600	470-1050	610-1260	750-1260
纸长 / SHEET LENGTH (mm)	210-410	280-600	330-620	460-800
功率 / POWER CONSUMPTION (KW)	10	10	13	13
外形尺寸 / MAIN MACHINE DIMENSION (mm)	1690W	1640W	2120W	2120W
	1700H	1520H	1520H	1770H
纸袋能力 (袋 / 分) / PRODUCTION SPEED (bags/m)	11300L	12475L	125600L	14595L
	60-70	60-70	60-70	50-60

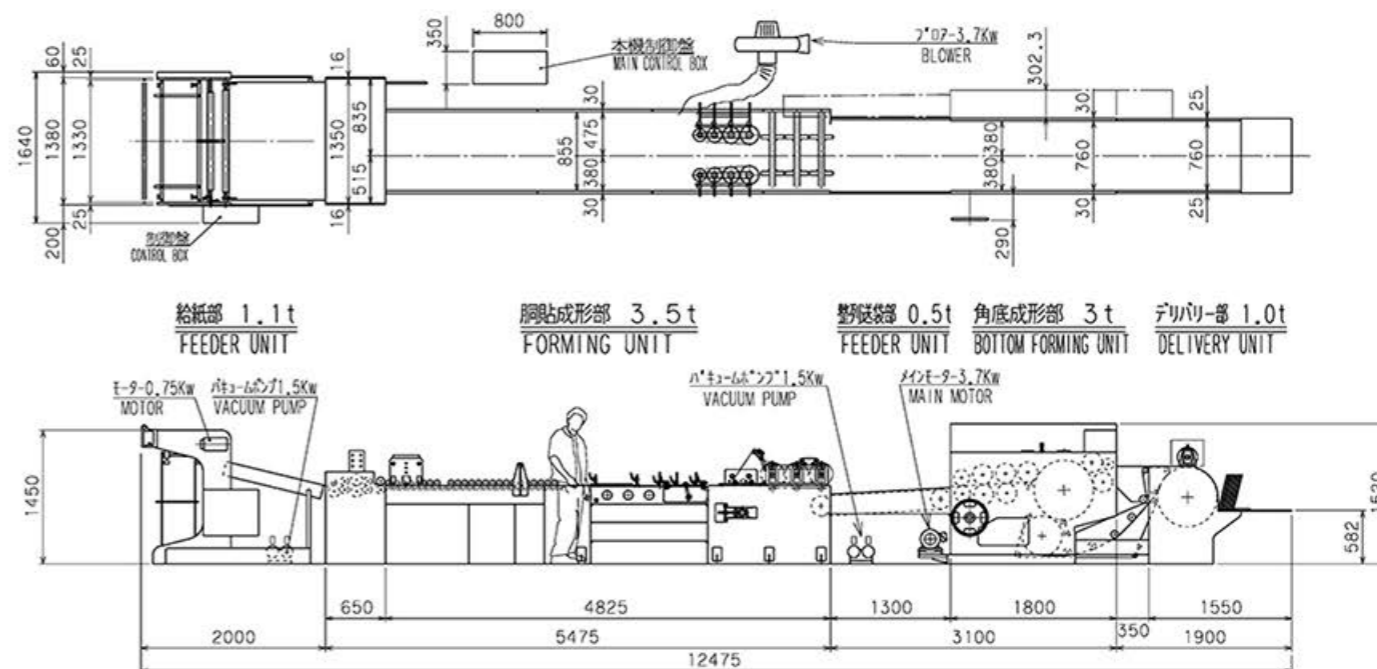
! SPECIAL // 特记事项

- 制袋原纸，贴提手绳纸等，请使用适合制袋机的材料。
- 已发生卷曲的原纸，请在飞达上纸前，将纸恢复平整。（请勿使用无法恢复平整的原材料纸）
- 请勿使用过分干燥或带有静电的原材料纸。
- 请勿使用难于绞合的原绳或无心原绳。
- 请使用，我方指定成份的粘合剂，为配合粘合剂的正确使用。
- 有必要对温度，湿度等进行管理。
- 袋宽与底宽限于一定范围进行组合。
- 纸筒粘合为外贴式，糊宽基本上为 25-30mm。
- 若使用实地印刷或贴 PP 膜的纸张，需让出纸筒贴合空白及底部贴合空白。
- 机械速度以 120 克重牛皮纸为准，但会由于纸质，克重，印刷，有否粘合 PP 膜，粘合剂材料，纸袋尺寸，作业环境不同而有所差异。
- 由于技术改良，部分规格可能有所变更，恕不预先告知。
- Please use proper paper rolls for bag making such as kraft paper.
- Too much dried paper and paper with static electricity cannot be used. Paper with curl cannot be used (for sheet fed machines).
- Too much twisted cord or soft code cannot be used.
- In case of using paper with laminated PP film, laminated layer (thickness) should be uniformed.
- Our recommended specifications of glue at each gluing section should be used (to be controlled in accordance with ambient temperature and humidity).
- Bag Width and Bottom width have limitation according to combination.
- Longitudinal glue position is on bag face and 25-30mm gluing space is necessary (optionally inner gusset gluing is possible).
- In case of using full printing rolls or PP laminated paper, basically bottom gluing part and longitudinal gluing part should be left. In this case, approx. 7 mm print overlap or lamination overlap is necessary.
- Production capacity depends on paper quality, paper weight, with or without print, glue quality, cord quality, bag size, operating environment, etc.
- Specifications are subject to change without notice.

袋王科技
半自动单张式方底纸袋制袋机

型号 / MODEL

KING SERIES 350



Contact Information

Shanghai Office: No. 178, Cheng Jian Rd., Min Hang Dist, Shanghai, P.R. China
Shanghai Factory: 338 Wenqu Road, Fengxian District, Shanghai, P.R. China
Dongtai Factory: No. 1818, Printing and Package Machinery Industrial Zone, Fu An Town, Dong Tai City, Jiang Su Province, P.R. China

(+86)-138-1673-5679

info@bonitec.net
info@yoco-group.cn

