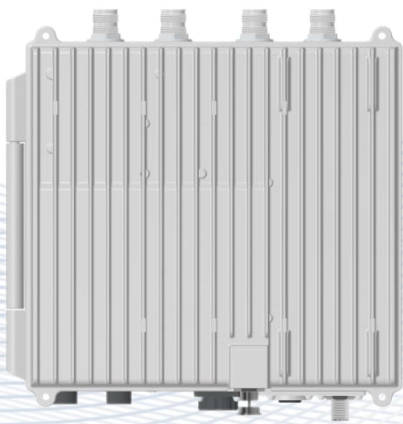


Femtocell sCELL-F4240-OD

sCELL-F4240-OD

LTE Enterprise Femtocell



2 x 2 MIMO

2 x 2x 250mw

2*64 Concurrent Users

2*192 RRC Connected Users

The F4240 is CBRS dual carrier LTE small cells targeted at indoor enterprise environments. The units can be installed by both end-users in “Plug-and-Play” mode and technicians in planned deployment. With 2*2*250mW output power of each cell and high-performance such as carrier aggregation, the F4240 can help mobile operators improve coverage and capacity with minimum cost.

Copyright © 2022 SUNWAVE All rights reserved.

Femtocell sCELL-F4240-OD

KEY FEATURES

- Standard LTE bands: TDD bands 42/43/48
- Peak data rate of each cell (20MHz)
 - DL 130Mbps (256QAM,SF2)
 - UL 30Mbps (64QAM,SF1)
- Peak data rate of carrier aggregation(20MHz)
 - DL 260Mbps (256QAM,SF2)
 - UL 60Mbps (64QAM,SF1)
- Maximum 2*64 VoLTE users, 2*64 RRC active users and 2*192 RRC connected users
- All IP based backhaul, many IP backhaul methods can be used, including RJ45 Ethernet, SFP
- Plug-and-play with SON features, including self-configuration, self-optimization, self-healing
- Local Web GUI management, network management with HeNB management server
- Compact and beautiful design, supplied with high performance integrated antennas.
- PoE supported. Lower power consumption to reduce OPEX.

APPEARANCE



HARDWARE SPECIFICATIONS

Chipset	Qualcomm: FSM9955 + 2*FTR8950
LTE Mode	TDD
Frequency Bands	TDD: 42/43/48
Channel Bandwidth	5/10/15/20 MHz
Characteristic Impedance	50Ω
Number of RF Ports	6 RF (4*ANT, SNF, GPS)
Max Output Power	24 dBm / antenna
Transmitter Performance	36.141, Home BS compliance
Receiver Performance	36.141, Home BS compliance
Synchronization	GPS, IEEE 1588v2 PTP, Network Listening
Backhaul	- 1 RJ45 Ethernet (10/100/1000 Auto-negotiating) - SFP

Copyright © 2022 SUNWAVE All rights reserved.

Femtocell sCELL-F4240-OD

Power Supply	- 90 ~ 254V AC to 12V DC - PoE+ (IEEE 802.3at standard)
Dimensions (H*W*D)	220*220*40 mm 8.67*8.67*1.57 in
Weight	< 1kg
Power Consumption (W)	< 20W
Antenna	-Internal: 3 dBi < 120° -External: 5 dBi omni antenna
Installation	Desktop, Ceiling or Wall mounted
Material	Top:plastic Bottom:cast-aluminium

SOFTWARE SPECIFICATIONS

LTE Standard	3GPP Release 12
Peak Data Rate (20MHz BW) of each cell	- DL 130Mbps (256QAM,SF2) - UL 30Mbps (64QAM,SF1)
Peak Data Rate (20MHz BW) of carrier aggregation	- DL 260Mbps (256QAM,SF2) - UL 60Mbps (64QAM,SF1)
Modulation	- DL:QPSK,16QAM,64QAM,256QAM - UL: QPSK,16QAM,64QAM
Max User Number	2 * 64 VoLTE users 2 * 64 RRC active users 2 * 192 RRC connected users
SON Features	-Self-configuration: Automatic Neighbor Relation (ANR) Physical Cell Identity (PCI) Auto-configuration Radio Environment Management (REM) S1/X2 auto configuration RACH channel self-configuration Channel Selection Transmission Power Management -Self-optimization: MRO, MLB, CCO, RACH organization -Self-healing: Automatic cell outage detection Software recovery
Maintenance	Online status monitoring and management Performance management, KPI recording Fault management, Alarm reporting Configuration management

Femtocell sCELL-F4240-OD

	Local or remote software upgrade User information tracing
QoS	3GPP standard QCI
MTBF	≥ 150000 hours
MTTR	≤ 1 hour

ENVIRONMENTAL SPECIFICATIONS

Operating Temperature	-5°C ~ +45°C +23 °F ~ +113 °F
Storage Temperature	-45°C ~ +70°C +49°F ~ +158 °F
Operating Humidity	5% to 95%
Storage Humidity	5% to 95%
IP Rating	IP30
Housing Self-extinguishing Class	V-0
Shock when packaged	ETSI 300 019 1-2 (class 2.3) NEBS GR63
Shock unpackaged	Max Drop Height: 750mm in hard ground

Contact Us Today
en.sunwave.com